



Sao Tome and Principe

Countdown to 2030

Women's, Children's & Adolescents' Health

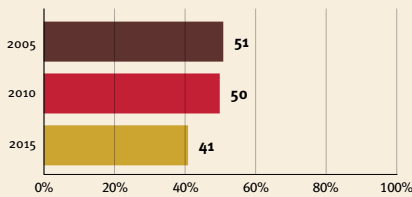
Demographics

Population	227,380
Annual births	6,370
Children under 5	30,498 (13%)
Under-five mortality	15/1,000

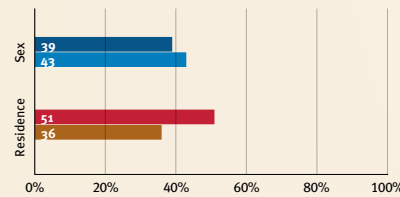
Threats to Early Childhood Development

Maternal mortality	146/100,000	Adolescent birth rate	86/1,000
Low birthweight	11%	Preterm births	11%
Child poverty	29%	Under-five stunting	10%
Violent discipline	80%	Inadequate supervision	21%

Young children at risk of poor development



Risk by sex and residence



Children with functional difficulty



Children developmentally on-track

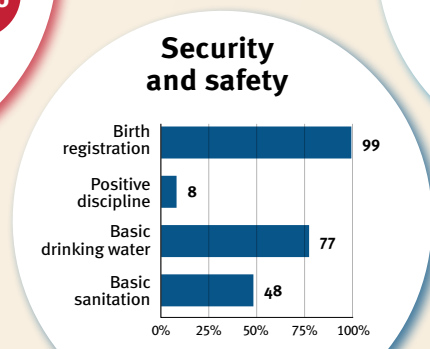
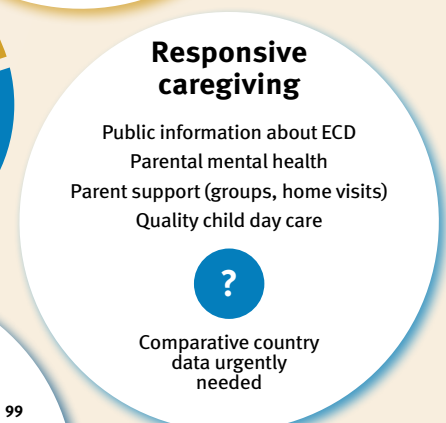
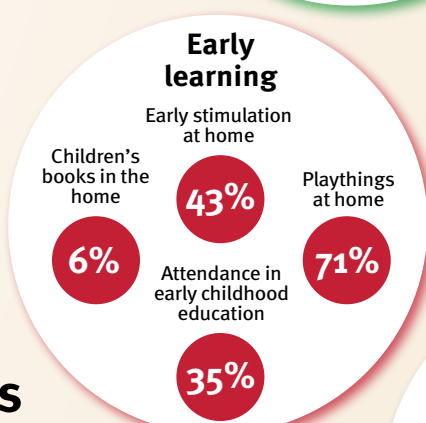
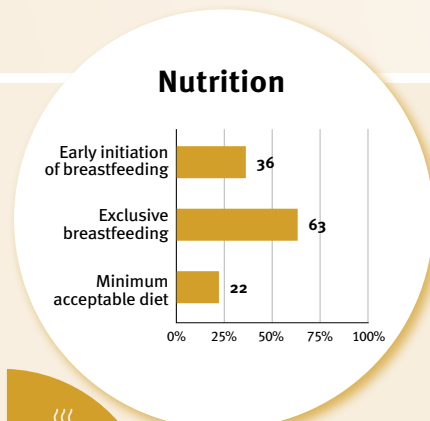
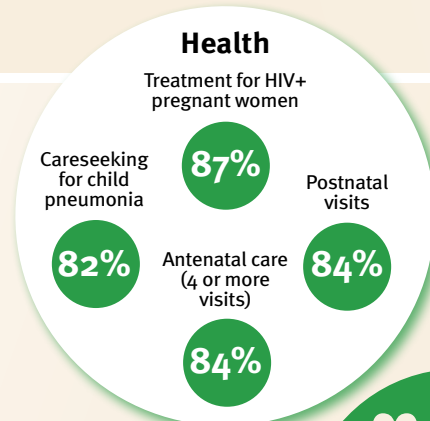


At risk in 2005, 2010 and 2015, using a composite indicator of under-five stunting or poverty

Support and services for early childhood development: Nurturing care

Parents and caregivers need a facilitating environment of laws, policies, services and community support to assist them in providing their young children with nurturing care.

Facilitating environments



Policies					
	<20%	20-39%	40-59%	60-79%	≥80%
Officially adopted national multisectoral ECD policy	X				
Child and family social protection	None	<14	14 - <18	18 - <26	≥26
Maternity leave (weeks)	None	<14	14 - <18	18 - <26	≥26
Paternity leave (weeks)	None	<14	14 - <18	18 - <26	≥26
International Code of Marketing of Breastmilk Substitutes (alignment)	Not	Slightly	Moderately	Substantially	

International conventions	
✓	Convention on the Rights of the Child
✓	Convention on the Rights of Persons with Disabilities
✓	CRC Optional Protocol on the Sale of Children, Child Prostitution and Child Pornography
X	Hague Convention on Protection of Children and Cooperation in Respect of Intercountry Adoption