



## Haiti

### Countdown to 2030

Women's, Children's & Adolescents' Health

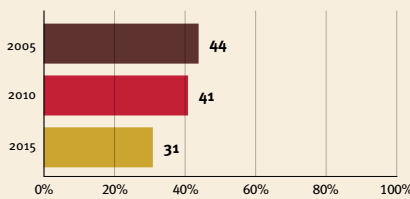
#### Demographics

Population	11,584,996
Annual births	268,523
Children under 5	1,276,532 (11%)
Under-five mortality	59/1,000

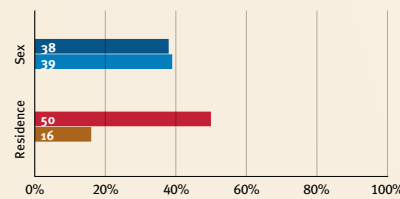
#### Threats to Early Childhood Development

Maternal mortality	350/100,000	Adolescent birth rate	55/1,000
Low birthweight	no data	Preterm births	14%
Child poverty	23%	Under-five stunting	20%
Violent discipline	82%	Inadequate supervision	22%

#### Young children at risk of poor development



#### Risk by sex and residence



#### Children with functional difficulty

no data

#### Children developmentally on-track

65%

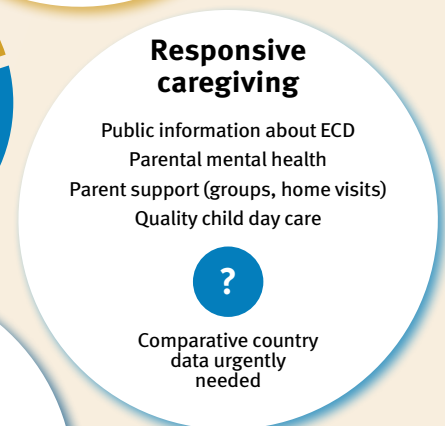
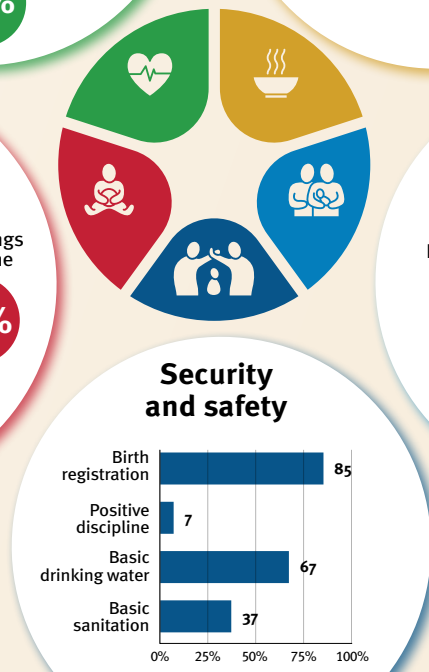
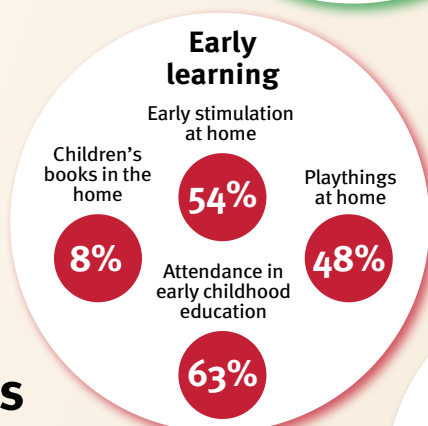
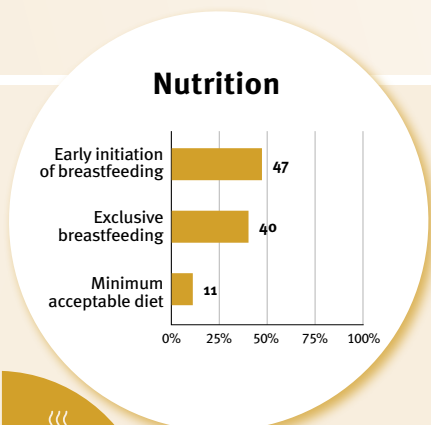
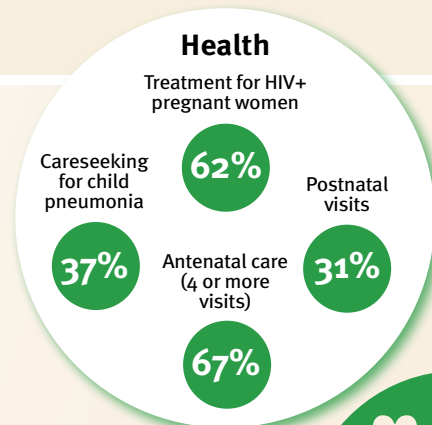
At risk in 2005, 2010 and 2015, using a composite indicator of under-five stunting or poverty

### Support and services for early childhood development: Nurturing care

Parents and caregivers need a facilitating environment of laws, policies, services and community support to assist them in providing their young children with nurturing care.

### Facilitating environments

Policies				
<20%	20-39%	40-59%	60-79%	≥80%
✓ Officially adopted national multisectoral ECD policy				
Child and family social protection				
None	<14	14 - <18	18 - <26	≥26
Maternity leave (weeks)				
None	<14	14 - <18	18 - <26	≥26
Paternity leave (weeks)				
Not	Slightly	Moderately	Substantially	
International Code of Marketing of Breastmilk Substitutes (alignment)				



#### International conventions

- ✓ Convention on the Rights of the Child
- ✓ Convention on the Rights of Persons with Disabilities
- ✓ CRC Optional Protocol on the Sale of Children, Child Prostitution and Child Pornography
- ✓ Hague Convention on Protection of Children and Cooperation in Respect of Intercountry Adoption