



Costa Rica

Countdown to 2030

Women's, Children's & Adolescents' Health

Demographics

Population	5,180,829
Annual births	60,517
Children under 5	320,263 (6%)
Under-five mortality	8/1,000

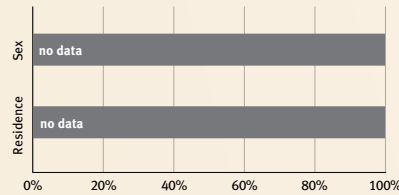
Threats to Early Childhood Development

Maternal mortality	22/100,000	Adolescent birth rate	27/1,000
Low birthweight	9%	Preterm births	14%
Child poverty	no data	Under-five stunting	10%
Violent discipline	53%	Inadequate supervision	7%

Young children at risk of poor development



Risk by sex and residence



Children with functional difficulty



Children developmentally on-track



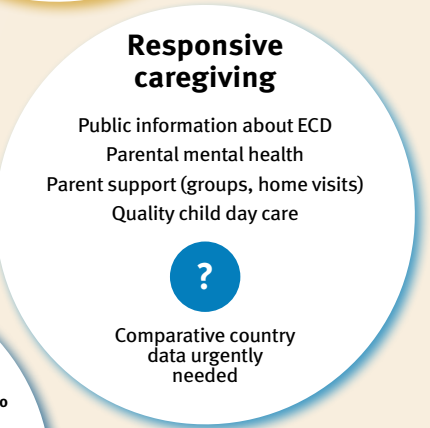
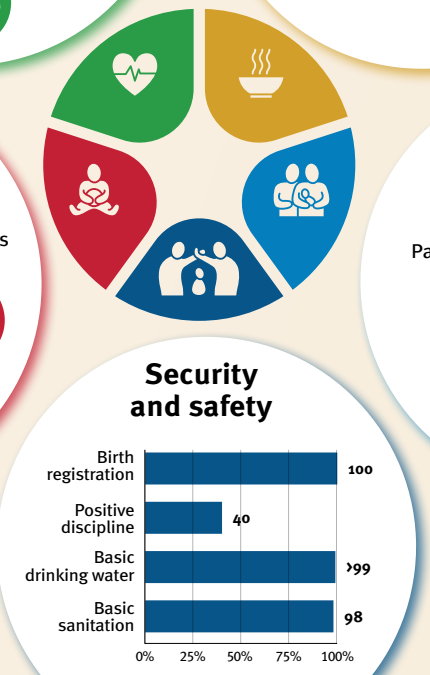
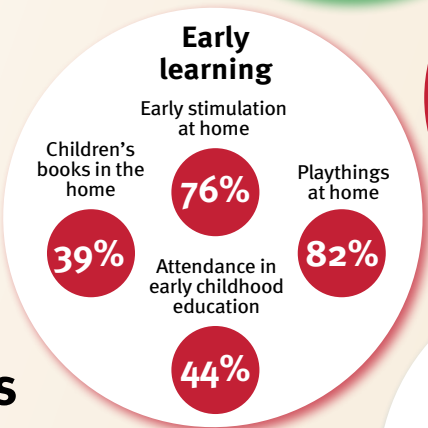
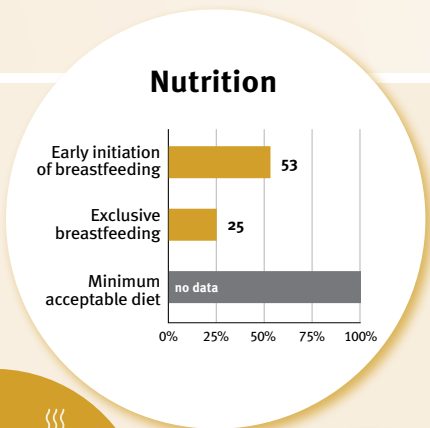
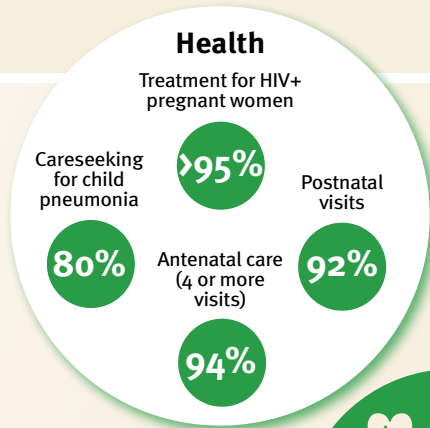
At risk in 2005, 2010 and 2015, using a composite indicator of under-five stunting or poverty

Support and services for early childhood development: Nurturing care

Parents and caregivers need a facilitating environment of laws, policies, services and community support to assist them in providing their young children with nurturing care.

Facilitating environments

Policies					
✓	<20%	20-39%	40-59%	60-79%	≥80%
Officially adopted national multisectoral ECD policy					
Child and family social protection					
None	<14	14 - <18	18 - <26	≥26	
Maternity leave (weeks)					
None	<14	14 - <18	18 - <26	≥26	
Paternity leave (weeks)					
Not	Slightly	Moderately	Substantially		
International Code of Marketing of Breastmilk Substitutes (alignment)					



International conventions

- ✓ Convention on the Rights of the Child
- ✓ Convention on the Rights of Persons with Disabilities
- ✓ CRC Optional Protocol on the Sale of Children, Child Prostitution and Child Pornography
- ✓ Hague Convention on Protection of Children and Cooperation in Respect of Intercountry Adoption