



# Bosnia and Herzegovina

Countdown to 2030

Women's, Children's & Adolescents' Health

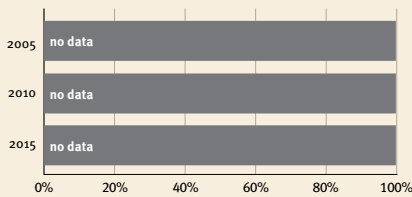
## Demographics

Population	3,233,527
Annual births	26,764
Children under 5	149,262 (5%)
Under-five mortality	6/1,000

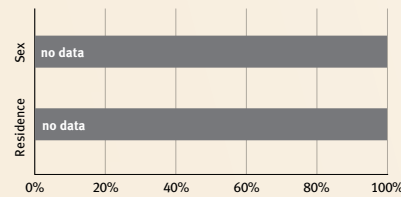
## Threats to Early Childhood Development

Maternal mortality	6/100,000	Adolescent birth rate	10/1,000
Low birthweight	5%	Preterm births	8%
Child poverty	no data	Under-five stunting	8%
Violent discipline	55%	Inadequate supervision	2%

## Young children at risk of poor development



## Risk by sex and residence



## Children with functional difficulty

no data

## Children developmentally on-track

96%

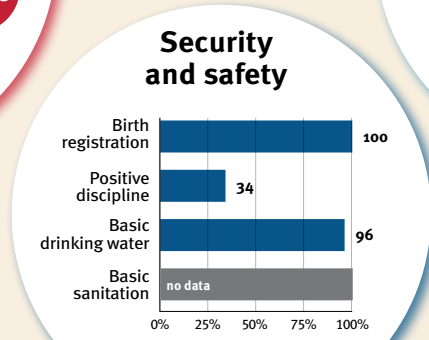
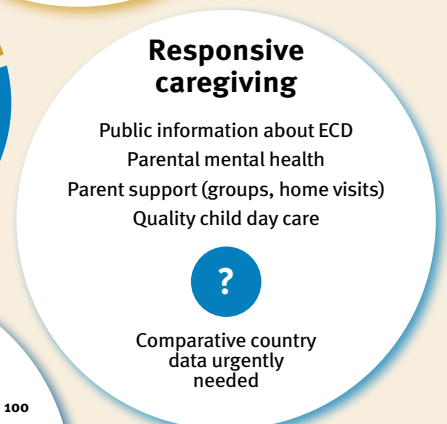
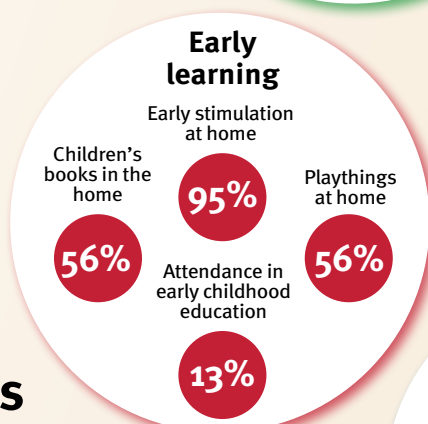
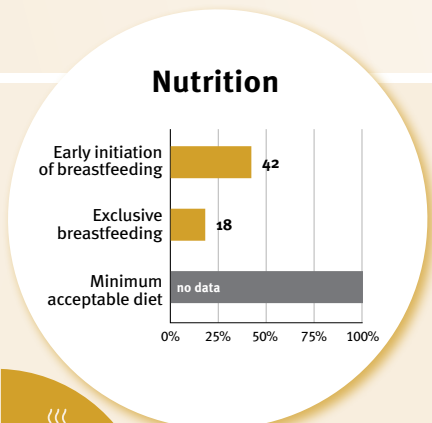
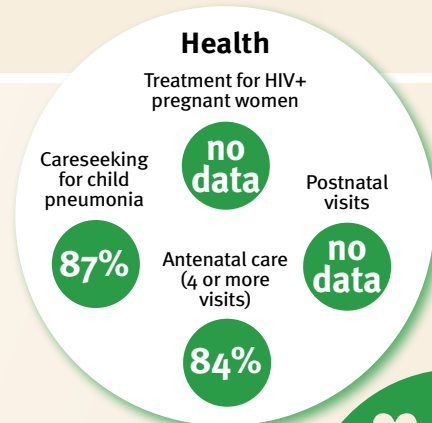
At risk in 2005, 2010 and 2015, using a composite indicator of under-five stunting or poverty

## Support and services for early childhood development: Nurturing care

Parents and caregivers need a facilitating environment of laws, policies, services and community support to assist them in providing their young children with nurturing care.

## Facilitating environments

Policies				
✓	20-39%	40-59%	60-79%	≥80%
Officially adopted national multisectoral ECD policy				
Child and family social protection				
None	<14	14 - <18	18 - <26	≥26
Maternity leave (weeks)				
None	<14	14 - <18	18 - <26	≥26
Paternity leave (weeks)				
Not	Slightly	Moderately	Substantially	
International Code of Marketing of Breastmilk Substitutes (alignment)				



International conventions	
✓	Convention on the Rights of the Child
✓	Convention on the Rights of Persons with Disabilities
✓	CRC Optional Protocol on the Sale of Children, Child Prostitution and Child Pornography
✗	Hague Convention on Protection of Children and Cooperation in Respect of Intercountry Adoption