



## Vanuatu

Countdown to 2030

Women's, Children's & Adolescents' Health

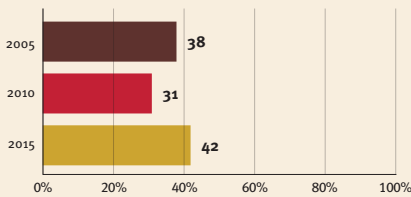
### Demographics

Population	314,464
Annual births	8,925
Children under 5	43,095 (14%)
Under-five mortality	26/1,000

### Threats to Early Childhood Development

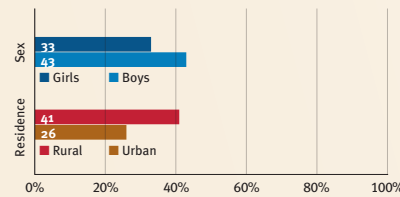
Maternal mortality	72/100,000	Adolescent birth rate	51/1,000
Low birthweight	11%	Preterm births	13%
Child poverty	18%	Under-five stunting	29%
Violent discipline	86%	Inadequate supervision	no data

### Young children at risk of poor development

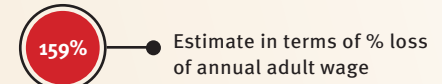


At risk in 2005, 2010 and 2015, using a composite indicator of under-five stunting or poverty

### Risk by sex and residence



### Lifetime cost of growth deficit in early childhood



### Children with functional difficulty

no data

### Children developmentally on-track

no data

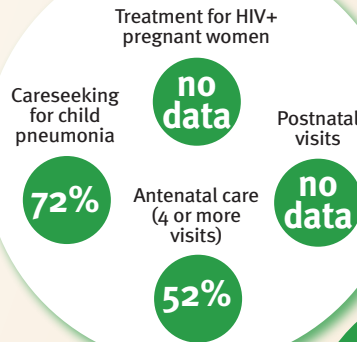
## Support and services for early childhood development: Nurturing care

Parents and caregivers need a facilitating environment of laws, policies, services and community support to assist them in providing their young children with nurturing care.

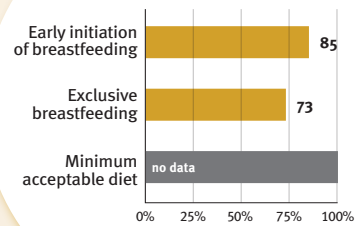
## Facilitating environments

Policies	None	<14	14 - <18	18 - <26	≥26
Paid maternity leave (weeks)	None	<14	14 - <18	18 - <26	≥26
Paid paternity leave (weeks)	Not	Slightly	Moderately	Substantially	
International Code of Marketing of Breastmilk Substitutes (alignment)	✓				
National minimum wage	✓				
Child and family social protection	✗				

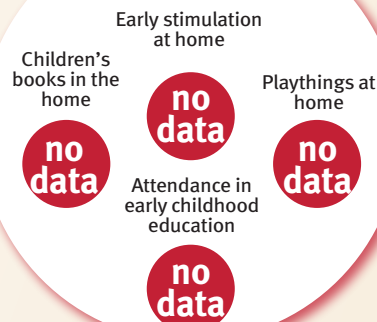
### Health



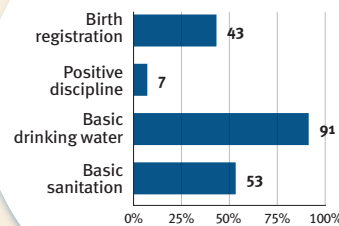
### Nutrition



### Early learning



### Security and safety



### Responsive caregiving

Public information about ECD  
Parental mental health  
Parent support (groups, home visits)  
Quality child day care

?

Comparative country data urgently needed

### International conventions

✓	Convention on the Rights of the Child
✓	Convention on the Rights of Persons with Disabilities
✓	CRC Optional Protocol on the Sale of Children, Child Prostitution and Child Pornography
✗	Hague Convention on Protection of Children and Cooperation in Respect of Inter-country Adoption