



## Uruguay

Countdown to 2030

Women's, Children's & Adolescents' Health

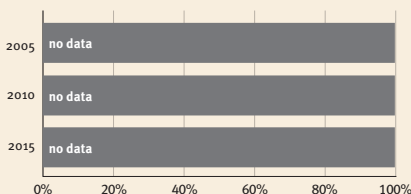
### Demographics

|                      |              |
|----------------------|--------------|
| Population           | 3,485,152    |
| Annual births        | 46,977       |
| Children under 5     | 235,000 (7%) |
| Under-five mortality | 7/1,000      |

### Threats to Early Childhood Development

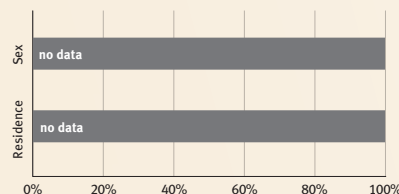
|                    |            |                        |          |
|--------------------|------------|------------------------|----------|
| Maternal mortality | 17/100,000 | Adolescent birth rate  | 36/1,000 |
| Low birthweight    | 8%         | Preterm births         | 10%      |
| Child poverty      | no data    | Under-five stunting    | 7%       |
| Violent discipline | 61%        | Inadequate supervision | 3%       |

### Young children at risk of poor development



At risk in 2005, 2010 and 2015, using a composite indicator of under-five stunting or poverty

### Risk by sex and residence



### Lifetime cost of growth deficit in early childhood

no data — Estimate in terms of % loss of annual adult wage

### Children with functional difficulty

no data

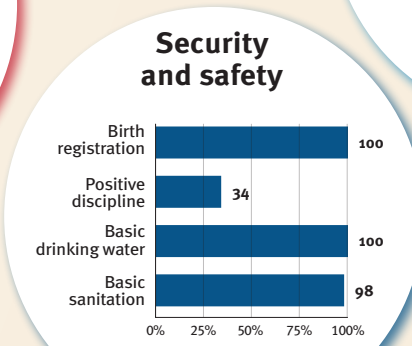
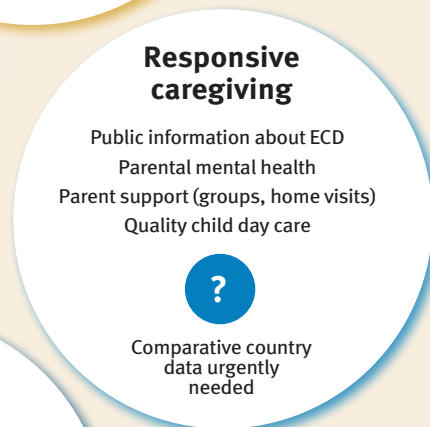
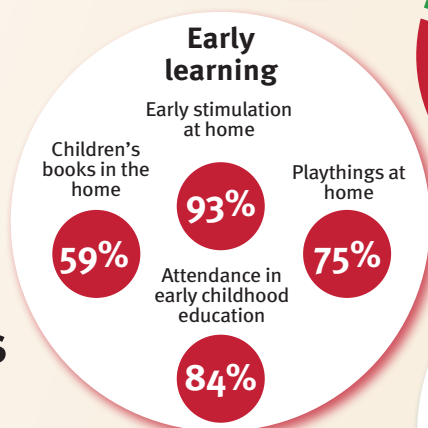
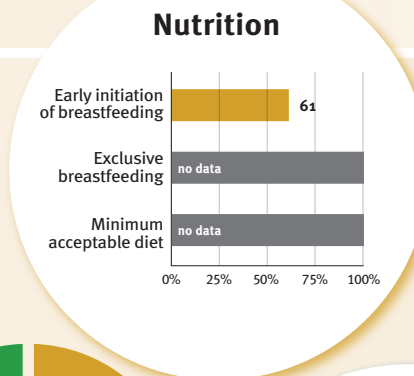
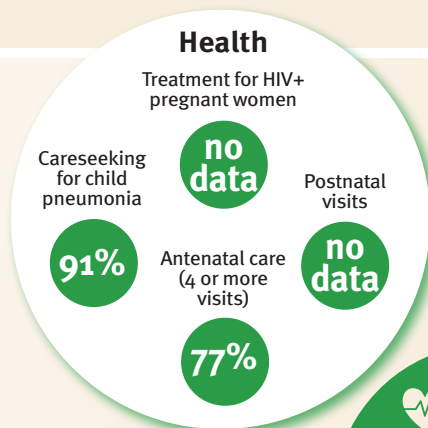
### Children developmentally on-track

87%

## Support and services for early childhood development: Nurturing care

Parents and caregivers need a facilitating environment of laws, policies, services and community support to assist them in providing their young children with nurturing care.

## Facilitating environments



### Policies

|                              | None | <14 | 14 – <18 | 18 – <26 | ≥26 |
|------------------------------|------|-----|----------|----------|-----|
| Paid maternity leave (weeks) |      |     |          |          |     |
| Paid paternity leave (weeks) |      |     |          |          |     |

|   | Not | Slightly | Moderately | Substantially |
|---|-----|----------|------------|---------------|
| International Code of Marketing of Breastmilk Substitutes (alignment) |     |          |            |               |
| National minimum wage   | ✓   |          |            |               |
| Child and family social protection                                    | ✓   |          |            |               |

### International conventions

|   |  |
|---|--|
| ✓ | Convention on the Rights of the Child  |
| ✓ | Convention on the Rights of Persons with Disabilities  |
| ✓ | CRC Optional Protocol on the Sale of Children, Child Prostitution and Child Pornography        |
| ✓ | Hague Convention on Protection of Children and Cooperation in Respect of Intercountry Adoption |