



## Saint Vincent and the Grenadines

Countdown to 2030

Women's, Children's & Adolescents' Health

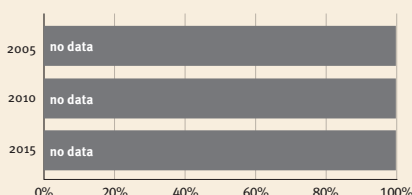
### Demographics

Population	111,269
Annual births	1,533
Children under 5	7,537 (7%)
Under-five mortality	15/1,000

### Threats to Early Childhood Development

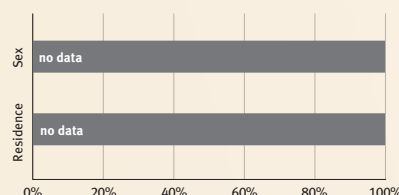
Maternal mortality	68/100,000	Adolescent birth rate	52/1,000
Low birthweight	no data	Preterm births	12%
Child poverty	no data	Under-five stunting	no data
Violent discipline	no data	Inadequate supervision	no data

### Young children at risk of poor development

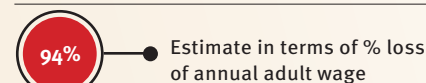


At risk in 2005, 2010 and 2015, using a composite indicator of under-five stunting or poverty

### Risk by sex and residence



### Lifetime cost of growth deficit in early childhood



### Children with functional difficulty



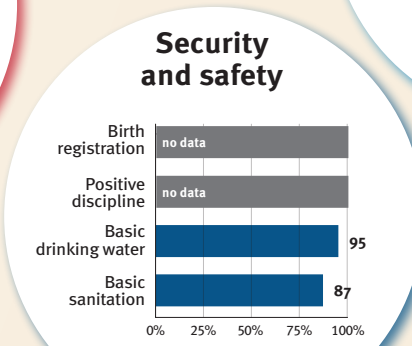
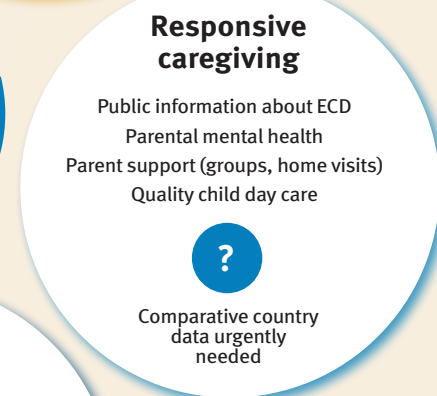
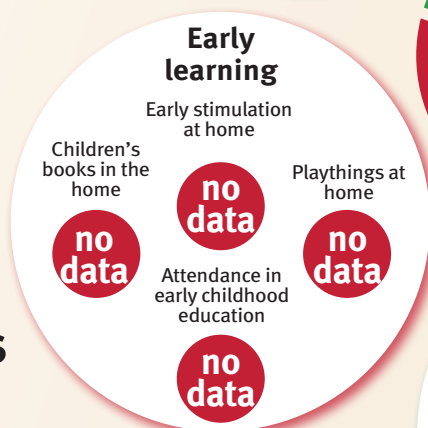
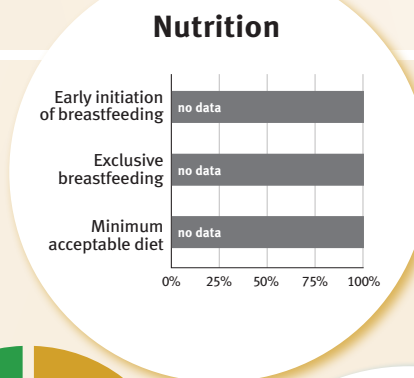
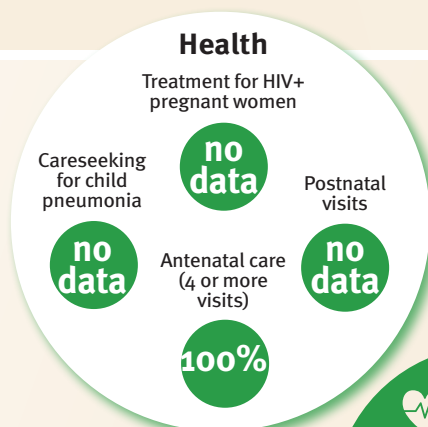
### Children developmentally on-track



## Support and services for early childhood development: Nurturing care

Parents and caregivers need a facilitating environment of laws, policies, services and community support to assist them in providing their young children with nurturing care.

## Facilitating environments



### Policies

None	<14	14 - <18	18 - <26	≥26
Paid maternity leave (weeks)				
None	<14	14 - <18	18 - <26	≥26
Paid paternity leave (weeks)				

Not	Slightly	Moderately	Substantially
International Code of Marketing of Breastmilk Substitutes (alignment)			
✓	National minimum wage		
✗	Child and family social protection		

### International conventions

✓	Convention on the Rights of the Child
✓	Convention on the Rights of Persons with Disabilities
✓	CRC Optional Protocol on the Sale of Children, Child Prostitution and Child Pornography
✗	Hague Convention on Protection of Children and Cooperation in Respect of Intercountry Adoption