



# Nicaragua

## Countdown to 2030

Women's, Children's & Adolescents' Health

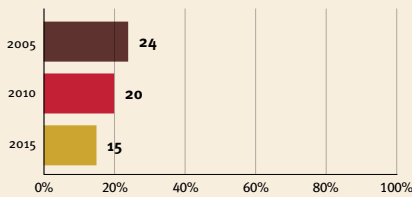
### Demographics

Population	6,948,392
Annual births	139,164
Children under 5	695,171 (10%)
Under-five mortality	13/1,000

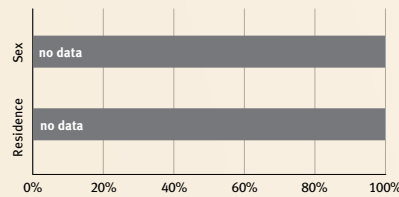
### Threats to Early Childhood Development

Maternal mortality	78/100,000	Adolescent birth rate	104/1,000
Low birthweight	10%	Preterm births	9%
Child poverty	no data	Under-five stunting	15%
Violent discipline	no data	Inadequate supervision	no data

### Young children at risk of poor development



### Risk by sex and residence



### Children with functional difficulty

no data

### Children developmentally on-track

no data

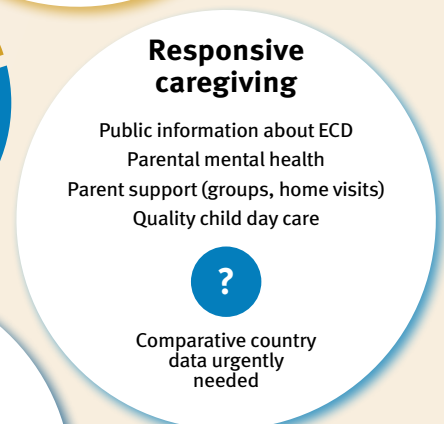
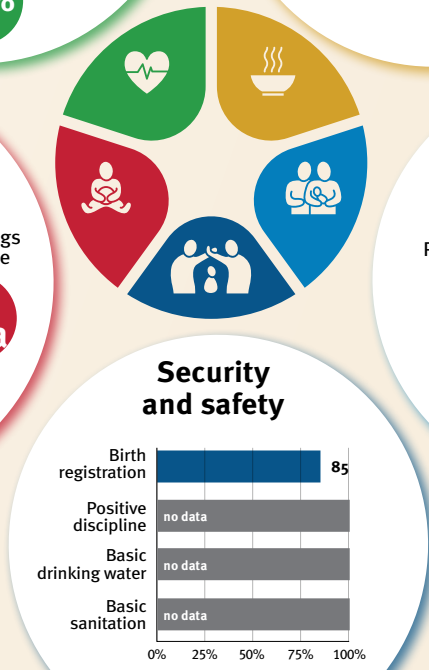
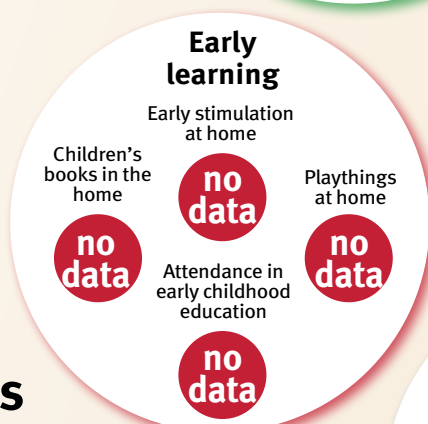
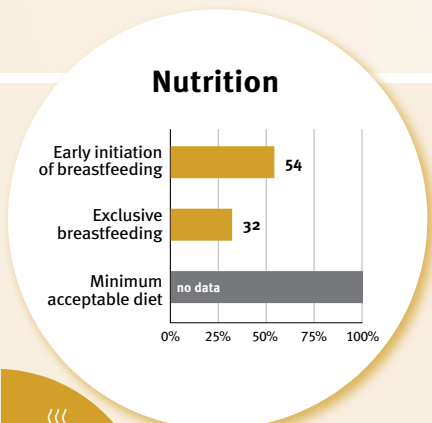
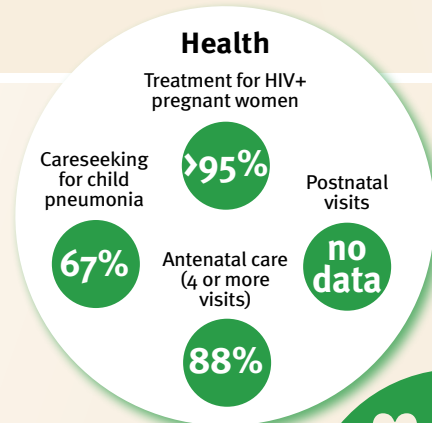
At risk in 2005, 2010 and 2015, using a composite indicator of under-five stunting or poverty

## Support and services for early childhood development: Nurturing care

Parents and caregivers need a facilitating environment of laws, policies, services and community support to assist them in providing their young children with nurturing care.

## Facilitating environments

Policies					
✔	<20%	20-39%	40-59%	60-79%	≥80%
Officially adopted national multisectoral ECD policy					
Child and family social protection					
None	<14	14 - <18	18 - <26	≥26	
Maternity leave (weeks)					
None	<14	14 - <18	18 - <26	≥26	
Paternity leave (weeks)					
Not	Slightly	Moderately	Substantially		
International Code of Marketing of Breastmilk Substitutes (alignment)					



International conventions	
✔	Convention on the Rights of the Child
✔	Convention on the Rights of Persons with Disabilities
✔	CRC Optional Protocol on the Sale of Children, Child Prostitution and Child Pornography
✘	Hague Convention on Protection of Children and Cooperation in Respect of Inter-country Adoption