



Jamaica

Countdown to 2030

Women's, Children's & Adolescents' Health

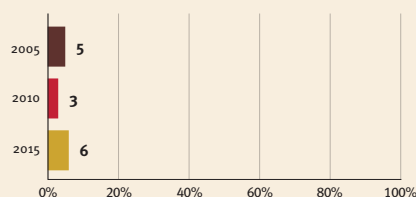
Demographics

| | |
|----------------------|--------------|
| Population | 2,973,462 |
| Annual births | 45,967 |
| Children under 5 | 227,302 (8%) |
| Under-five mortality | 14/1,000 |

Threats to Early Childhood Development

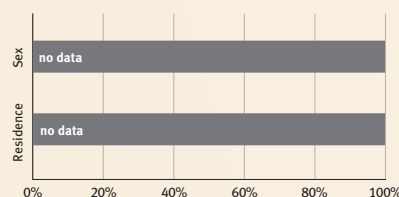
| | | | |
|--------------------|------------|------------------------|----------|
| Maternal mortality | 80/100,000 | Adolescent birth rate | 52/1,000 |
| Low birthweight | 15% | Preterm births | 10% |
| Child poverty | no data | Under-five stunting | 9% |
| Violent discipline | 85% | Inadequate supervision | 2% |

Young children at risk of poor development

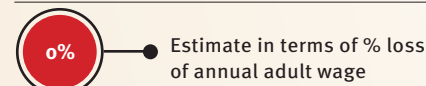


At risk in 2005, 2010 and 2015, using a composite indicator of under-five stunting or poverty

Risk by sex and residence



Lifetime cost of growth deficit in early childhood



Children with functional difficulty



Children developmentally on-track



Support and services for early childhood development: Nurturing care

Parents and caregivers need a facilitating environment of laws, policies, services and community support to assist them in providing their young children with nurturing care.

Facilitating environments

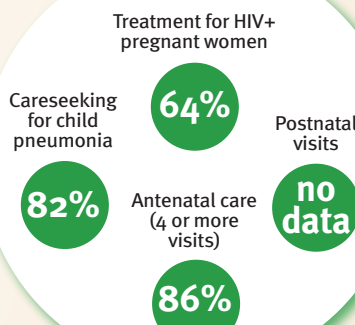
Policies

| | None | <14 | 14 - <18 | 18 - <26 | ≥26 |
|------------------------------|------|-----|----------|----------|-----|
| Paid maternity leave (weeks) | | | | | |
| Paid paternity leave (weeks) | | | | | |

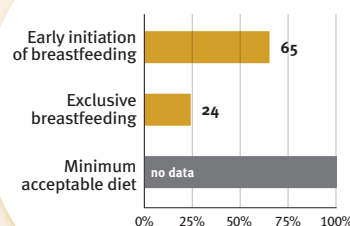
| | Not | Slightly | Moderately | Substantially |
|---|-----|----------|------------|---------------|
| International Code of Marketing of Breastmilk Substitutes (alignment) | | | | |

| | |
|---|------------------------------------|
| ✓ | National minimum wage |
| ✓ | Child and family social protection |

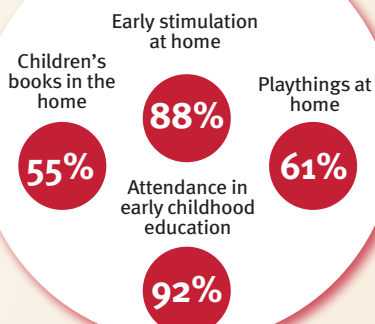
Health



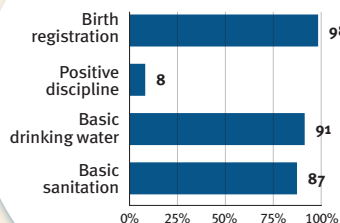
Nutrition



Early learning



Security and safety



Responsive caregiving

Public information about ECD
Parental mental health
Parent support (groups, home visits)
Quality child day care



Comparative country data urgently needed

International conventions

| | |
|---|---|
| ✓ | Convention on the Rights of the Child |
| ✓ | Convention on the Rights of Persons with Disabilities |
| ✓ | CRC Optional Protocol on the Sale of Children, Child Prostitution and Child Pornography |
| ✗ | Hague Convention on Protection of Children and Cooperation in Respect of Inter-country Adoption |