



Cote D'Ivoire

Countdown to 2030

Women's, Children's & Adolescents' Health

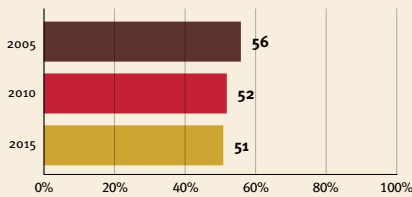
Demographics

Population	28,160,543
Annual births	943,133
Children under 5	4,262,981 (15%)
Under-five mortality	75/1,000

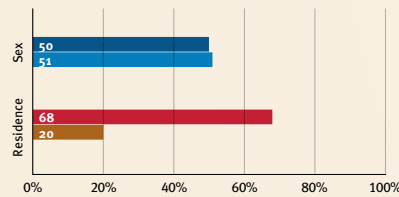
Threats to Early Childhood Development

Maternal mortality	480/100,000	Adolescent birth rate	119/1,000
Low birthweight	18%	Preterm births	14%
Child poverty	33%	Under-five stunting	20%
Violent discipline	83%	Inadequate supervision	20%

Young children at risk of poor development



Risk by sex and residence



Children with functional difficulty

no data

Children developmentally on-track

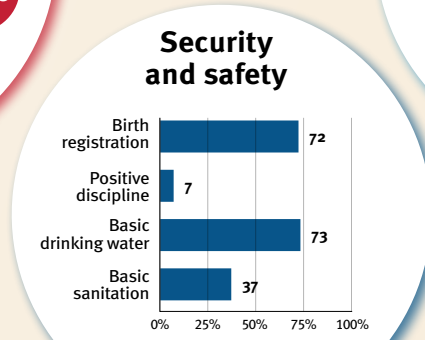
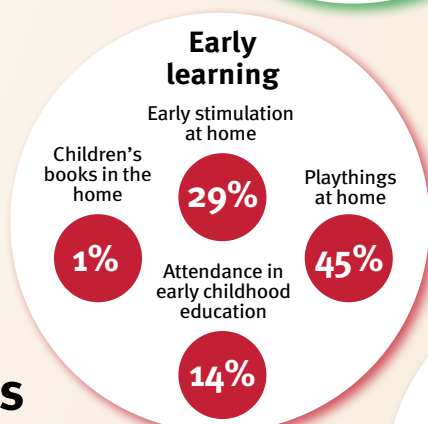
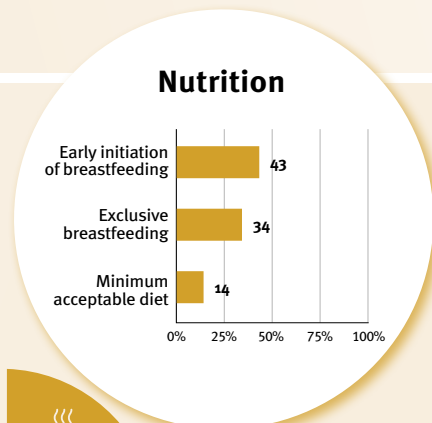
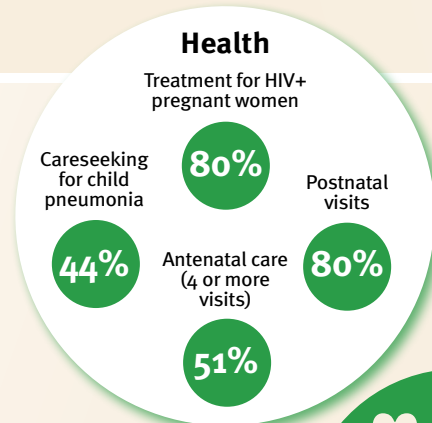
63%

At risk in 2005, 2010 and 2015, using a composite indicator of under-five stunting or poverty

Support and services for early childhood development: Nurturing care

Parents and caregivers need a facilitating environment of laws, policies, services and community support to assist them in providing their young children with nurturing care.

Facilitating environments



Policies					
	<20%	20-39%	40-59%	60-79%	≥80%
Officially adopted national multisectoral ECD policy	X				
Child and family social protection	None	<14	14 - <18	18 - <26	≥26
Maternity leave (weeks)	None	<14	14 - <18	18 - <26	≥26
Paternity leave (weeks)	None	<14	14 - <18	18 - <26	≥26
International Code of Marketing of Breastmilk Substitutes (alignment)	Not	Slightly	Moderately	Substantially	

International conventions	
✓	Convention on the Rights of the Child
✓	Convention on the Rights of Persons with Disabilities
✓	CRC Optional Protocol on the Sale of Children, Child Prostitution and Child Pornography
✓	Hague Convention on Protection of Children and Cooperation in Respect of Intercountry Adoption