



# Central African Republic

Countdown to 2030

Women's, Children's & Adolescents' Health

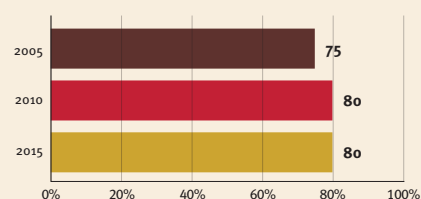
## Demographics

Population	4,919,987
Annual births	171,351
Children under 5	745,741 (15%)
Under-five mortality	110/1,000

## Threats to Early Childhood Development

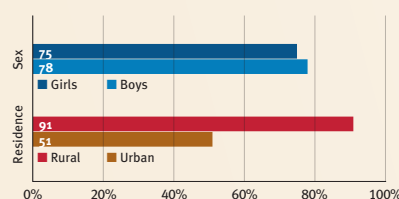
Maternal mortality	829/100,000	Adolescent birth rate	229/1,000
Low birthweight	15%	Preterm births	13%
Child poverty	64%	Under-five stunting	40%
Violent discipline	85%	Inadequate supervision	49%

## Young children at risk of poor development

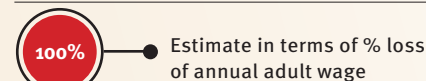


At risk in 2005, 2010 and 2015, using a composite indicator of under-five stunting or poverty

## Risk by sex and residence



## Lifetime cost of growth deficit in early childhood



## Children with functional difficulty

15%

## Children developmentally on-track

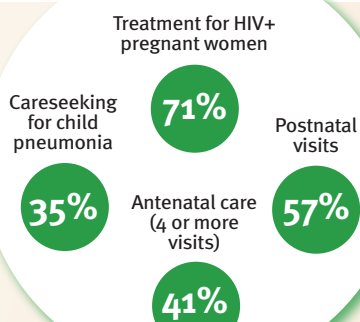
36%

## Support and services for early childhood development: Nurturing care

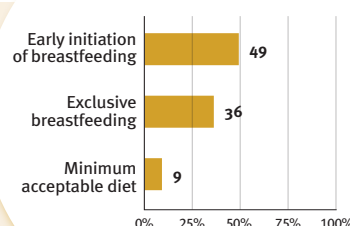
Parents and caregivers need a facilitating environment of laws, policies, services and community support to assist them in providing their young children with nurturing care.

## Facilitating environments

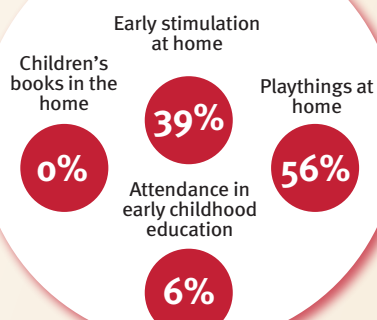
### Health



### Nutrition



### Early learning



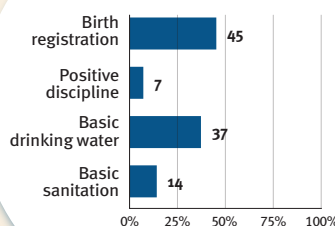
### Responsive caregiving

Public information about ECD  
Parental mental health  
Parent support (groups, home visits)  
Quality child day care

?

Comparative country data urgently needed

### Security and safety



## Policies

	None	<14	14 - <18	18 - <26	≥26
Paid maternity leave (weeks)					
Paid paternity leave (weeks)					

	Not	Slightly	Moderately	Substantially
International Code of Marketing of Breastmilk Substitutes (alignment)				

X National minimum wage

X Child and family social protection

## International conventions

✓	Convention on the Rights of the Child
✓	Convention on the Rights of Persons with Disabilities
✓	CRC Optional Protocol on the Sale of Children, Child Prostitution and Child Pornography
X	Hague Convention on Protection of Children and Cooperation in Respect of Intercountry Adoption