



Brazil

Countdown to 2030

Women's, Children's & Adolescents' Health

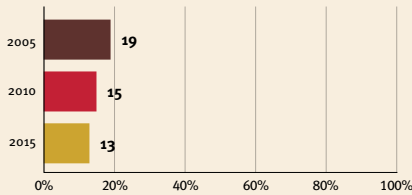
Demographics

Population	215,313,498
Annual births	2,723,266
Children under 5	14,057,192 (7%)
Under-five mortality	14/1,000

Threats to Early Childhood Development

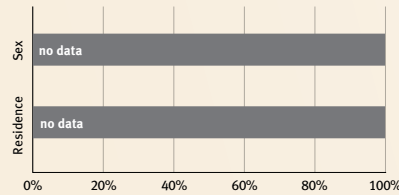
Maternal mortality	72/100,000	Adolescent birth rate	43/1,000
Low birthweight	9%	Preterm births	9%
Child poverty	no data	Under-five stunting	7%
Violent discipline	no data	Inadequate supervision	no data

Young children at risk of poor development



At risk in 2005, 2010 and 2015, using a composite indicator of under-five stunting or poverty

Risk by sex and residence



Children with functional difficulty

no data

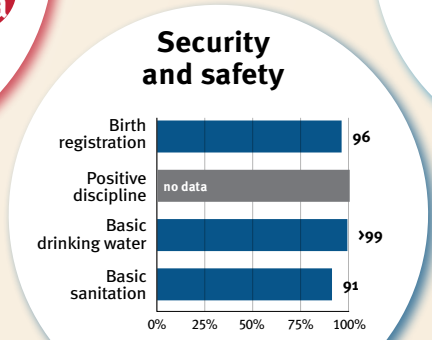
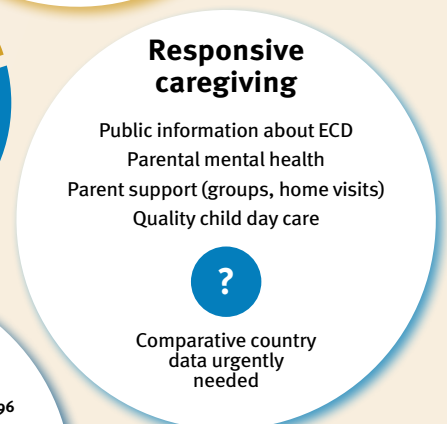
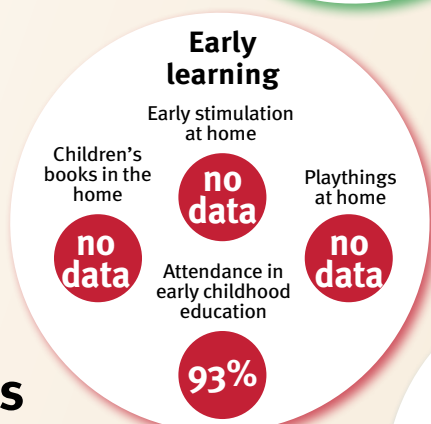
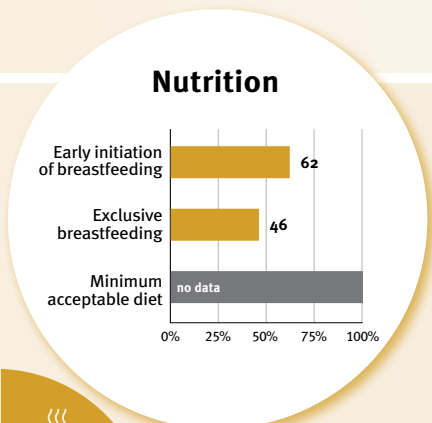
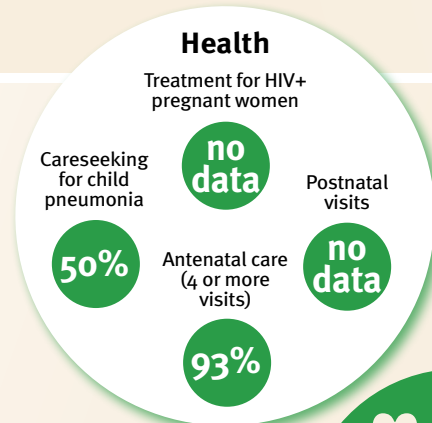
Children developmentally on-track

no data

Support and services for early childhood development: Nurturing care

Parents and caregivers need a facilitating environment of laws, policies, services and community support to assist them in providing their young children with nurturing care.

Facilitating environments



Policies				
✓	20-39%	40-59%	60-79%	≥80%
Officially adopted national multisectoral ECD policy				
Child and family social protection				
None	<14	14 - <18	18 - <26	≥26
Maternity leave (weeks)				
None	<14	14 - <18	18 - <26	≥26
Paternity leave (weeks)				
Not	Slightly	Moderately	Substantially	
International Code of Marketing of Breastmilk Substitutes (alignment)				

International conventions	
✓	Convention on the Rights of the Child
✓	Convention on the Rights of Persons with Disabilities
✓	CRC Optional Protocol on the Sale of Children, Child Prostitution and Child Pornography
✓	Hague Convention on Protection of Children and Cooperation in Respect of Intercountry Adoption